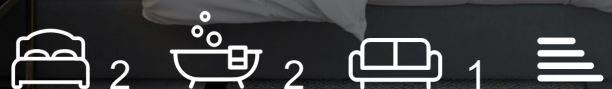


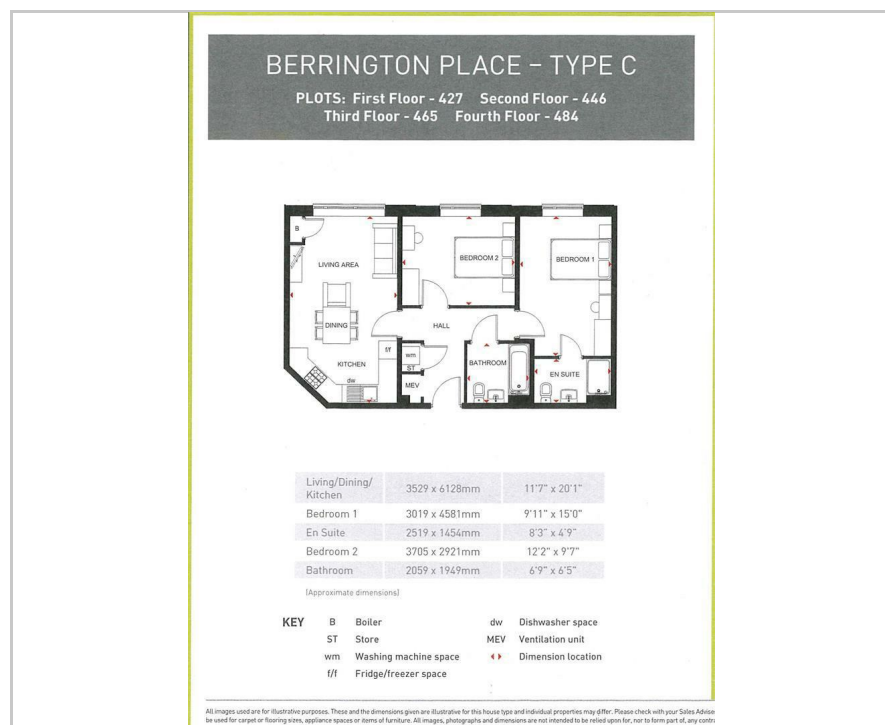
Berrington Place St. Lukes Road

Birmingham, B5 7DP

Offers Around £246,000



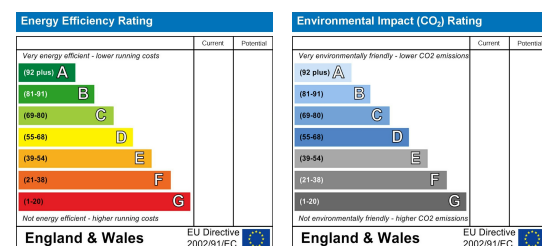
Floor Plan



Area Map



Energy Efficiency Graph



Viewing

Please contact our LV PROPERTY Office on 01212857575 if you wish to arrange a viewing appointment for this property or require further information.

- BRAND NEW BARRATT HOMES ■ WALKING DISTANCE TO CITY CENTRE
- ZERO GROUND RENT ■ INCLUDES FLOORING AND FITTED WINDOWS
- SYMPHONY FITTED KITCHEN ■ INTEGRATED APPLIANCES
- GAS CENTRAL HEATING ■ SHARED OWNERSHIP AVAILABLE

** BRAND NEW DEVELOPMENT **

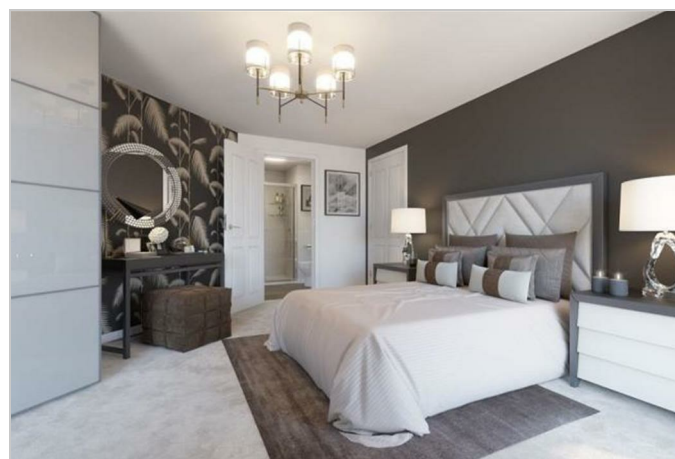
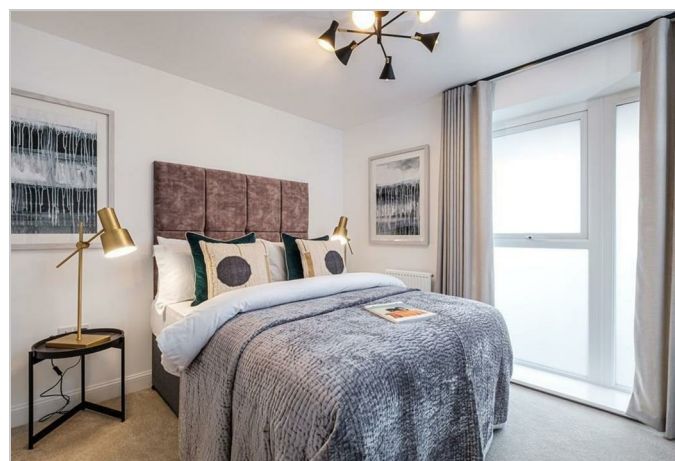
Berrington Place is a brand new development built by the award-winning Barratt Homes. This development is within the heart of Birmingham's vibrant city centre and offers a selection of one and two-bedroom luxury apartments. The apartments have been designed with modern-day living in mind.

The two double bedroom apartments benefit from two bathrooms, finished to a high standard. The open plan living area consists of a Symphony style kitchen and good living space.

The square footage varies' s so please contact us regarding this.

It is situated 0.9 miles away from New Street Station, 0.7 miles away from the famous Chinese Quarter, 1.2 miles away from Cannon Hill Park, 1 mile away from the popular Mailbox, and 0.5 miles away from Sunset Park.

Situated very close by to the main Bristol Road and Belgrave Middleway meaning that transport links are fantastic.



These particulars, whilst believed to be accurate are set out as a general outline only for guidance and do not constitute any part of an offer or contract. Intending purchasers should not rely on them as statements of representation of fact, but must satisfy themselves by inspection or otherwise as to their accuracy. No person in this firm's employment has the authority to make or give any representation or warranty in respect of the property.



0121 285 7575
www.lvproperty.co.uk

157c Warstone Lane, Jewellery Quarter,
Birmingham, West Midlands, B18 6NZ